

## Integro 51 II basic 60 cm antracit

Item number: 513.21.0062.2

€ 773,19

EAN: 5703347533297

A

Integro 51 II Basic Antracit 60 cm is a built-in hood that is fully integrated into the wall cabinet. Simple installation and design.

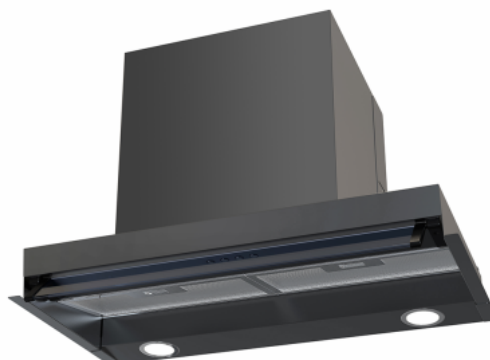
Integro 51 II Basic Antracit 60 cm from Thermex is a fully integrated built-in hood designed for installation under a wall cabinet. Made of antracit painted steel with a tilting glass panel in the front, it features two decorative grease filters and two LED lamps. Cleaning is a simple affair - a quick wipe with a damp cloth, and the filters can be washed in the dishwasher. The installation is straightforward, as the hood replaces the bottom of the cabinet, making it easy to integrate into the kitchen's design.

The operation of Integro 51 II Basic Antracit is straightforward with push buttons. It offers three speed settings and an on/off function for the light, allowing the user to customize the suction power and lighting as needed.

With a suction capacity of up to 334 m<sup>3</sup>/h, Integro 51 II Basic Antracit can effectively handle the extraction of vapors and odors during cooking. At the same time, the noise level is kept low at only 55 dB(A), ensuring a comfortable and quiet operation, even during intensive use.

### Specifications

|                                     |  |
|-------------------------------------|--|
| Minimum airflow [m <sup>3</sup> /h] | <b>184</b>                                 |
| Minimum-Soundpower [dB(A)]          | <b>55</b>                                  |
| Maximum-airflow [m <sup>3</sup> /h] | <b>334</b>                                 |
| Maximum-Soundpower [dB(A)]          | <b>65</b>                                  |
| Energy consumption [W]              | <b>73</b>                                  |
| Control                             | <b>Soft touch</b>                          |
| Material                            | <b>Black painted steel and Black glass</b> |



## Tilkøb af montering

| Name               | Number        | Price       |
|--------------------|---------------|-------------|
| Monteringservice 2 | 999.99.5002.0 | € 16.759,91 |

## Aftrækstilbehør

| Name   | Number        | Price    |
|--|---------------|----------|
| Mini Plasmex   | 535.21.1500.9 | € 607,86 |
| Thermex Plasmex® filter I - Round                    | 535.10.1000.9 | € 911,29 |
| Carbon Flex Filter                                   | 535.46.1000.9 | € 304,44 |
| flex hose. Ø 162 mm per meters                       | 800.70.4162.9 | € 35,29  |
| Hose set Ø160 1.2 meters                             | 800.70.6160.9 | € 66,54  |
| Hose set pvc ø162 mm                                 | 800.70.7160.9 | € 87,70  |
| Sound- and condensation-insulated flex hose Ø 162 mm | 810.16.5160.9 | € 91,74  |
| Tension band 6 60-165 mm                             | 815.16.8206.9 | € 17,14  |
| Exhaust set Ø 160 mm                                 | 830.51.2162.9 | € 98,79  |
| Exhaust set - sound/condensation insulated Ø162 mm   | 830.51.6162.9 | € 178,43 |
| Recirculation filter for Integro 51 II Basic         | 535.21.8450.9 | € 30,24  |
| Duct/cover Integro 51 II / Premium                   | 537.21.4108.9 | € 107,86 |

## Thermex Link

| Name                               | Number        | Price    |
|------------------------------------|---------------|----------|
| Safemex stove guard - 1 phase      | 536.06.1000.0 | € 839,71 |
| Thermex Trigger Link Module        | 536.99.1000.9 | € 231,85 |
| Thermex Plasmex® Smart Link Module | 536.99.1150.9 | € 437,50 |